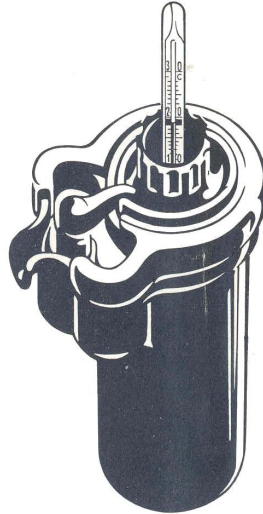


MINOX

Daylight Developing Tank

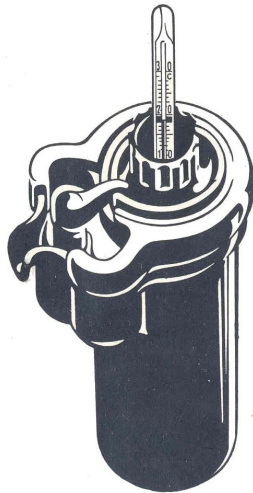
Working Directions



The

MINOX-Developing Tank

requires no dark-room. Films may be inserted and completely developed in full daylight.



The MINOX Tank: closed



Screw out film-drum of the tank in clockwise direction up to the work stop and subsequently detach it together with the top part.

For insertion into the tank the film cartridge is prepared by carefully pulling out the film-leader from that one of the two boxes not provided with a circular opening. Be sure not to pull any film out of the other box with the circular opening.



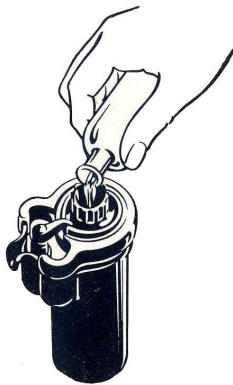
Place cartridge upon the top part and screw out the drum until the film end can be shoved under the spring and buttoned to the screw. Now screw in the drum, but not beyond the point where screw stands at the end of the film slot, with the film lying flush and smooth.



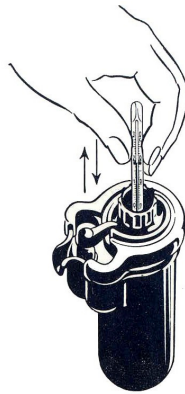
This done, the tank is placed over the top part taking special care that the parts fit and lock perfectly. After turning the tank around and putting it on the table the drum is screwed back into the tank by **counterclockwise** turns.



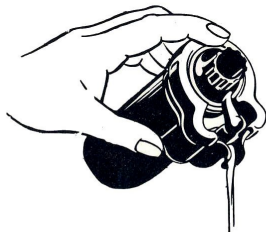
The end position is reached as soon as the elastic hook on the top part engages the upper end of the drum and as resistance is met with. Please do not turn the drum beyond the end position! Circulation of the developer is effected by moving the thermometer up and down.



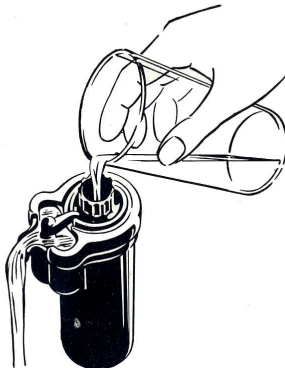
The carefully filtered developing agent (53 ccm) is now slowly poured in through the central opening until it shows up in the wide part of the opening. By occasionally lifting the tank and setting it down on the table air bubbles will be prevented from clinging to the film.



Now place the thermometer into the central opening and move it slowly up and down during developing to produce a circulation within the liquid. The prescribed developing temperature is to be currently checked and maintained. (See table in instructions of developer).



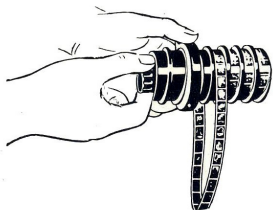
Pour out developing liquid after process is completed. In doing so hold top part in place with the index finger thus preventing it from sliding out of the tank.



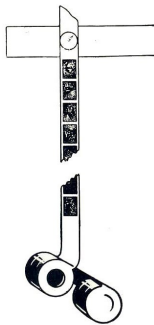
The tank is now to be thoroughly rinsed with clean and, possibly, filtered water, changing the water two or three times. This done, the fixing bath is poured into the tank. All solutions including the water should be approximately the same temperature to avoid reticulation of the emulsion.



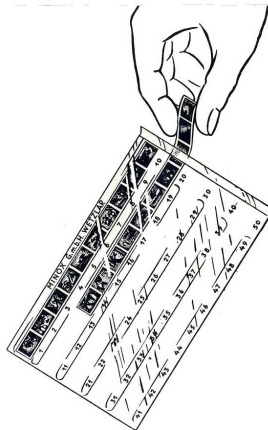
For final cleaning and washing a thin stream of water (through filter if possible) should be directed into the central opening. After rinsing the drum and top part are to be taken out of the tank. While holding the top part in the left hand, turn the drum clockwise in horizontal position, whereupon the film will wind off by itself in a loop (see picture on next page).



Soaking the film in a wetting agent (which is part of the MINOX-developer set) prevents it from getting stains or streaks after drying. No need therefore to clean the film with a moist buckskin, thus avoiding scratches on the emulsion and shortening the drying process considerably.

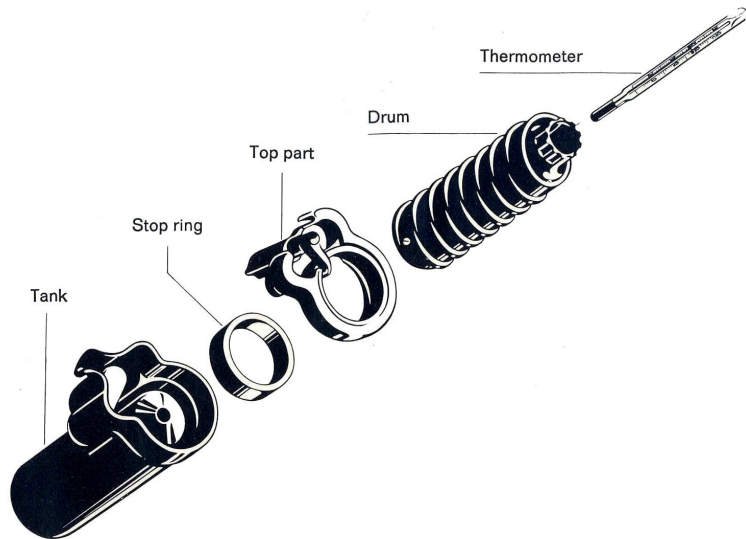


For drying suspend the film, as indicated, the empty cartridges hanging down and acting as a weight. The drying should be done in a place free from dust without ventilation.



After drying, the film is cut into 5 strips of 10 pictures each, which are being kept in the MINOX Film Wallet. To keep them in proper position and order the following method is suggested when cutting the film.

Continued on last page.



Components of the MINOX-Developing Tank

First cut off the empty film cartridge at the first picture. Next the strip with the 10 pictures to follow. The latter, with the emulsion side down and with picture Nr. 1 in front, is now inserted into the first section (1 to 10) of the film envelope. The next strips of the film are then to be proceeded with in the same manner, whereupon all pictures will be in the envelope duly orientated as regards sides, horizontal pictures in upright position, the numbers corresponding with the numbers of the exposures.

After use, remove the drum from the top part. Thoroughly clean and dry all parts of the tank even if it be intended to use the tank again right afterwards. The tank should not be assembled until all parts are completely dry.

Stop ring for 36-exposure films

Before developing a 36-exposure film, slide the enclosed stop ring over the inner tank core and let it drop to the bottom of the tank.

After attaching the film to the drum, turn the drum into the tank slowly, until it is stopped by the ring. **Do not continue to turn the drum after reaching the stop.**

With the stop ring inserted, use the normal volume of 53 cc solution.

MINOX

MINOX GmbH Optical and Precision Engineering Works 63 Giessen 1 P.O.B. 137

Germany